



Operating instructions

Segment pit covering



Type

Serial number

Date

Operating instructions

Contents

Contents

1	Fundamental safety instructions.....	2
1.1	Designated use	2
1.2	Construction and function	2
1.3	Description of symbols and notes	2
2	Operation.....	3
2.1	Notes on safety	3
2.2	Extending covering	3
2.3	Retracting covering	3
2.4	Driving over the covering.....	3
3	Maintenance	4
3.1	Changing segments	4
4	Building the pit	4
4.1	Pit frame.....	4
4.2	Concreteing	4
4.3	Fine concrete floor	5
4.4	Mounting of steel frame	5
4.5	Concreteing the workshop floor	6
4.6	Inserting the segments	6
4.7	Check	6
4.8	Welding of fixing sheets	6
5	EC Declaration of Conformity	7
6	Appendix	8

1 Fundamental safety instructions

1.1 Designated use

The segment covering is only intended for pits which show the stipulated pit dimensions. Any use otherwise is considered as not complying with the regulations.

1.2 Construction and function

The segment covering is constructed to cover the working pit. At the side of the pit, cassette segments are arranged along the whole length. Every covering element contains a slide of 500 mm width that can be pulled out like a drawer. Operation is carried out manually by means of a special hook. The complete or partly covered pit can be walked on and driven on. Whilst in use, please observe the current safety regulations.

1.3 Description of symbols and notes



Danger

Mortal danger and risk of injury.



Caution

Damage to property.



Information and tips.

Operating instructions

Operation

2 Operation

2.1 Notes on safety

- The covering slides must only be pulled out and pushed in with the operating hook supplied with this equipment.
- The slides must always be pulled out to their full extent. Make sure that they are safely positioned on the opposite supporting rest. Slides which are not completely pulled out stand upwards at an angle so that they are easily recognisable.
- When the pit is only partly covered, close it off suitably according to current safety instructions.
- When the pit is completely covered it can be driven over with a maximum allowed weight limit on the axle of 10 to. This limit must not be exceeded.
- Prior to walking or driving on the pit cover, always check whether all sections are completely extended and lie properly.

2.2 Extending covering

**Caution**

Never push in and pull out the slides with the hands. Use the operating hook to avoid injury!

Slightly lift the covering slide with the hook, pull out and place carefully on the supporting rest on the opposite side.

2.3 Retracting covering

**Caution**

Never push in and pull out the slides with the hands. Use the operating hook to avoid injury!

Lift up the covering slide with the hook and push in.

2.4 Driving over the covering

**Caution**

Only drive over the closed covering very slowly. Avoid braking and accelerating.

Operating instructions

Maintenance

3 Maintenance

- Do not let dirt enter the cassette
- If the segment is hard to move, remove it, clean it and clean and/or grease the wheels.

3.1 Changing segments

All segments can be exchanged at any time. After loosening both fixing screws on the front wall under the covering slides (extend about 200 mm) the complete segment can be lifted up and pulled out. This is also necessary when changing the internal guiding rolls.

4 Building the pit

4.1 Pit frame

- The pit frame must be prepared prior to starting construction.
- Profile: IPB 120 DIN 1025
- Length: to be adjusted to $n \times 500$ mm
- Installation help: cross beam for measurement 900 mm

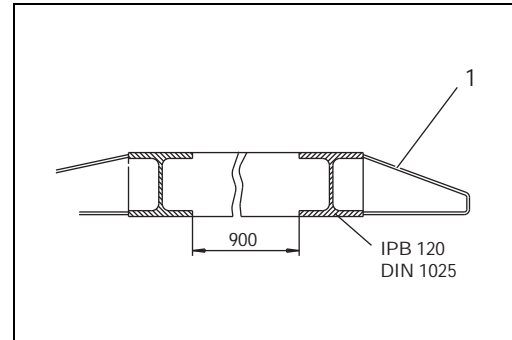


Fig. 1:

4.2 Concreteing

- Concrete pit 1 according to the static guidelines.
- Set top edge of frame - 200 mm \pm 2
- Concrete to -230 mm.
- Surface 2 to be -230 .

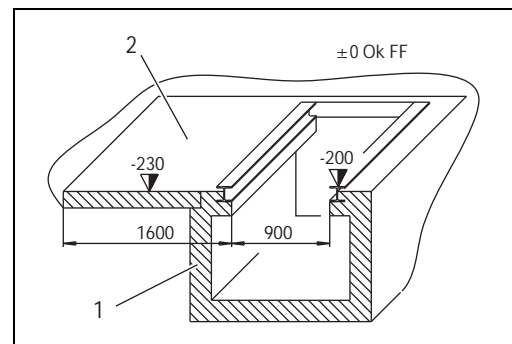


Fig. 2:

Operating instructions

Building the pit

4.3 Fine concrete floor

The concrete floor must be executed with utmost accuracy

- Top edge concrete floor: -200mm
- Even surface: $\pm 2\text{mm}$

Otherwise according to DIN18202

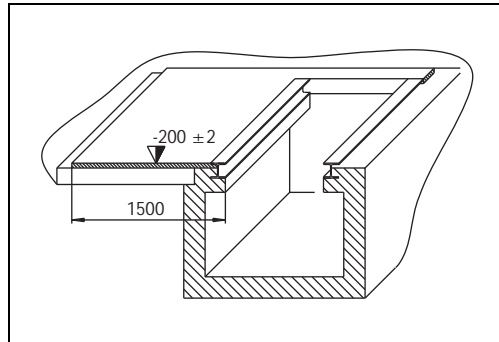


Fig. 3:

4.4 Mounting of steel frame

Job sequence:

- Weld metal side frame (1), maintain measurement of 40mm over whole length, right-angledness to be observed.
- Fix metal side frame (2) with plugs, maintain measurements $2275 \pm 2\text{mm}$ over whole length, right-angledness to be observed.
- Mount metal end frame (3), pay attention to length grid! Fix frame with plugs, weld corners from the outside, seal joints with silicone.
- Support with stretching braces (4), check measurement 2275 over whole length with enclosed gauge (5).
- Whilst the concrete is hardening check the measurement 2275^{+5} occasionally with the gauge, regulate the tension of the stretching braces if necessary.

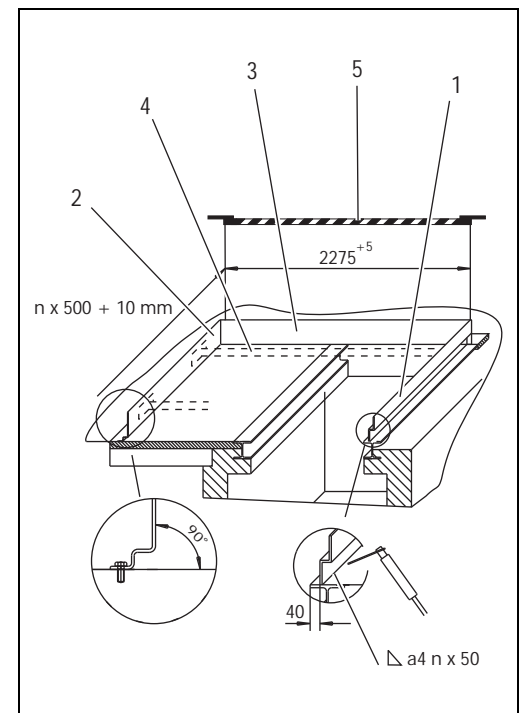


Fig. 4:

Operating instructions

Building the pit

4.5 Concreteing the workshop floor

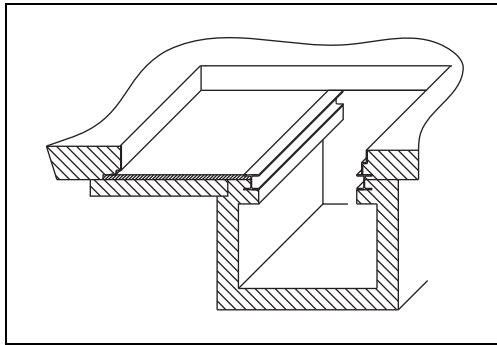


Fig. 5:

4.6 Inserting the segments

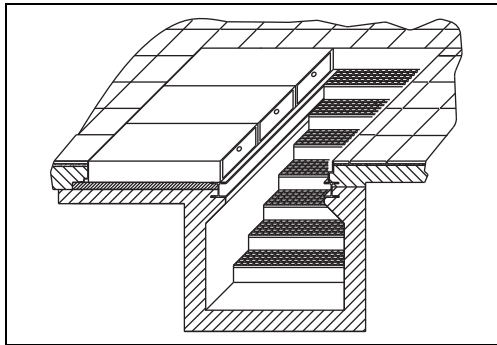


Fig. 6:

4.7 Check

- The measurement 2275^{+5} mm along the whole length of the pit.
- The secure support of the slide on the opposite supporting rest.
- The end play is max. 30 mm.

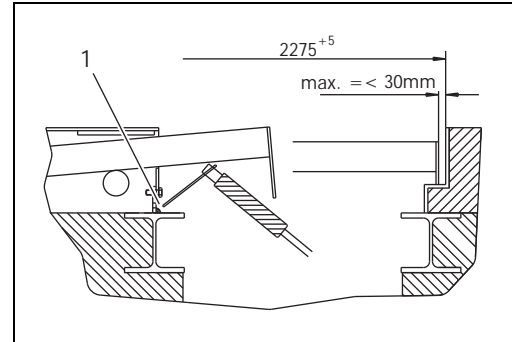


Fig. 7:

4.8 Welding of fixing sheets

- When all segments are inserted, aligned and their safe operation has been checked, then the fixing sheets have to be welded from inside the pit.
- Repeat check as in section 4.7



Operating instructions EC Declaration of Conformity

5 EC Declaration of Conformity

In the meaning of the EEC Machinery Directive 98/37 EC, Annex II A for installed machines.

This certification applies to the Blitz product Segment pit covering (Type and Serial No. see at front cover)

The Segment pit covering was constructed and manufactured in compliance with the regulations of the EC Guidelines.

BlitzRotary GmbH
Hüfinger Straße 55
D-78199 Bräunlingen

The following harmonised standards were applied:

- 37/23 EWG
- 292, 1+2

A complete technical documentation is available. The operating instructions that belong to the axle free lifter are on file.

Bräunlingen, 01.07.2007

A handwritten signature in black ink, consisting of a large, stylized 'C' followed by a smaller, more complex signature.

C.Rohde, Management

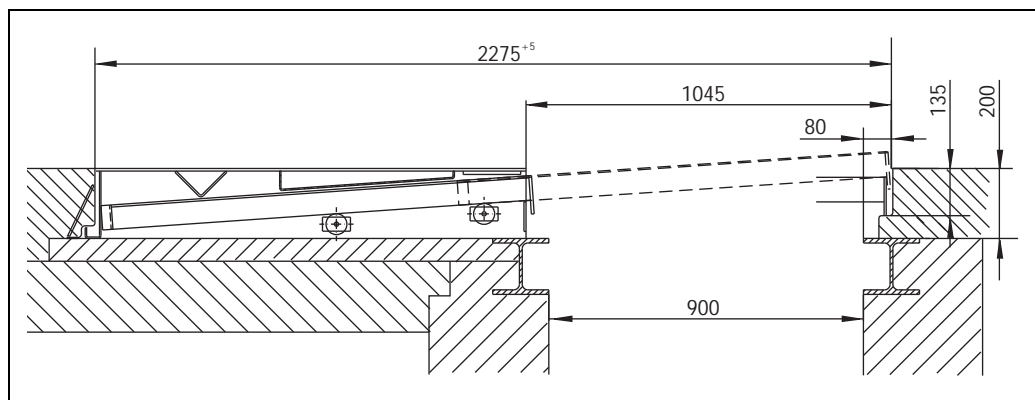
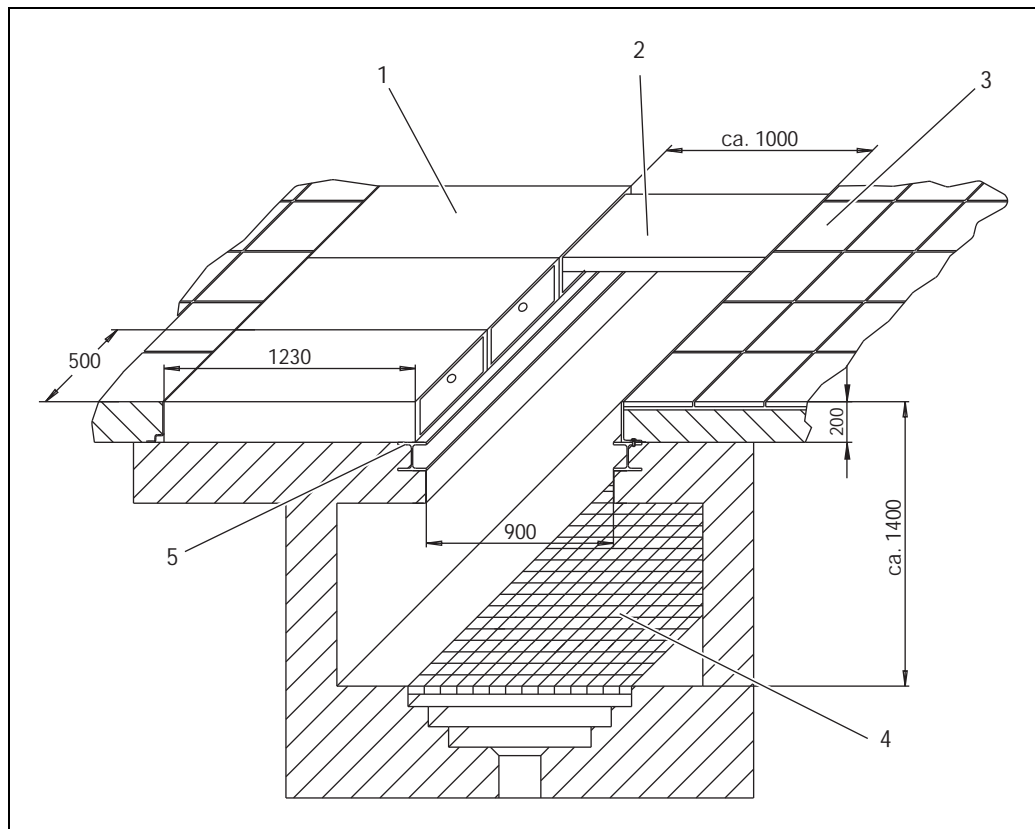
→

6 Appendix

Technical data

Width of Pit	900 mm
Capacity	10 t axle load
Weight	250 kg/m

Dimensional drawing

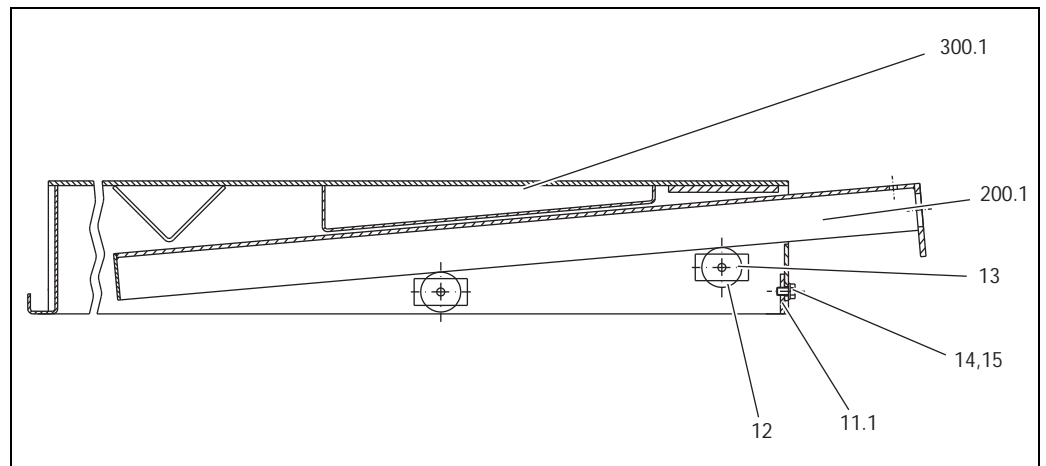


1	Cassette
2	Slide
3	Floor
4	Gridiron
5	Frame

Operating instructions

Appendix

Spare part list



Pos.	Pieces	Description	Order No.	Comment
11.1	1	fastening bracket	47100111	
12	4	roller	4710012	
13	4	adapter sleeve 12 x 50	708210	
14	2	spanner bolt galvanized M 12x25 DIN 933 8.8	700218	
99	1	operating hook	4710099	
200.1	1	slide complete	4710200	
300.1	1	cassette welded	4710300	
15	2	washer galvanized A 12 DIN 125	703413	
	1	segment complete	4710	



BLITZ M. Schneider
Werkzeug- u. Maschinenfabrik
GmbH

Hüfingerringstraße 55
D-78199 Bräunlingen
Telefon + (49) 07 71-92 33-0
Telefax + (49) 07 71-92 33-99
eMail info@blitz-schneider.de
Internet www.blitz-schneider.de

